

Type	length [mm]	A [mm]	B [mm]	C [mm]	D [mm]	E [mm]	F [mm]	G [mm]	H [mm]	I [mm]	J [mm]
CAH-900 M PD	900	270	270	234	880	194	300	250	300	40	100
CAH-1200 M PD	1200	270	270	234	1180	194	370	370	370	40	100
CAH-1500 M PD	1500	270	270	234	1480	194	370	370	370	40	100

Technical parameters

Additional illustrations

Cabinet

is made of powder-coated steel sheet in white (RAL 9003).

Fans

The door screens use special silent metal tangential fans.

Engine

is asynchronous with short armature. IP20 protection.

Heater

The screen is supplied with an electric heater, the heater can be switched off.

Electrical connection

is made to the terminal block on the cabinet of the door screen. The curtain includes a magnetic door contact.

Regulation

is carried out by a remote control, which is supplied with the screen, or from a panel on the screen housing. The regulator can be used to switch speed in 2 stages. The power of the heater is adjustable in 2 stages. Manual or automatic mode controlled by door contact is available.

Frost protection

The supplied air curtains are circulating with air intake from the room and are therefore not equipped with frost protection.

Mounting

The screens can be mounted directly on the wall. Maximum installation height 3 m above the floor. The minimum distance from the ceiling or walls must be 500 mm.

Noise

All models are characterised by a low noise level due to the balanced impeller.

Variants

- CAH-900 M PD – with el. heater 3.6 kW
- CAH-1200 M PD – with el. heater 6 kW
- CAH-1500 M PD – with el. heater 9 kW

Information

Air door screen with remote control in a compact design with easy installation suitable for small commercial or industrial premises. Multiple screens can be arranged side by side if required.



remote control (HxWxD 120x50x15 mm) and door contact are included



terminal block on the door screen cabinet



consultation
and aperture design
phone 724 071 506

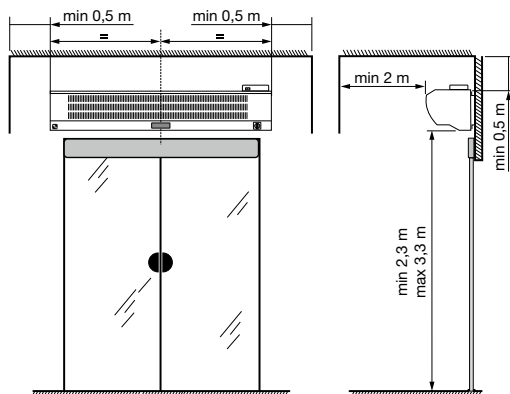
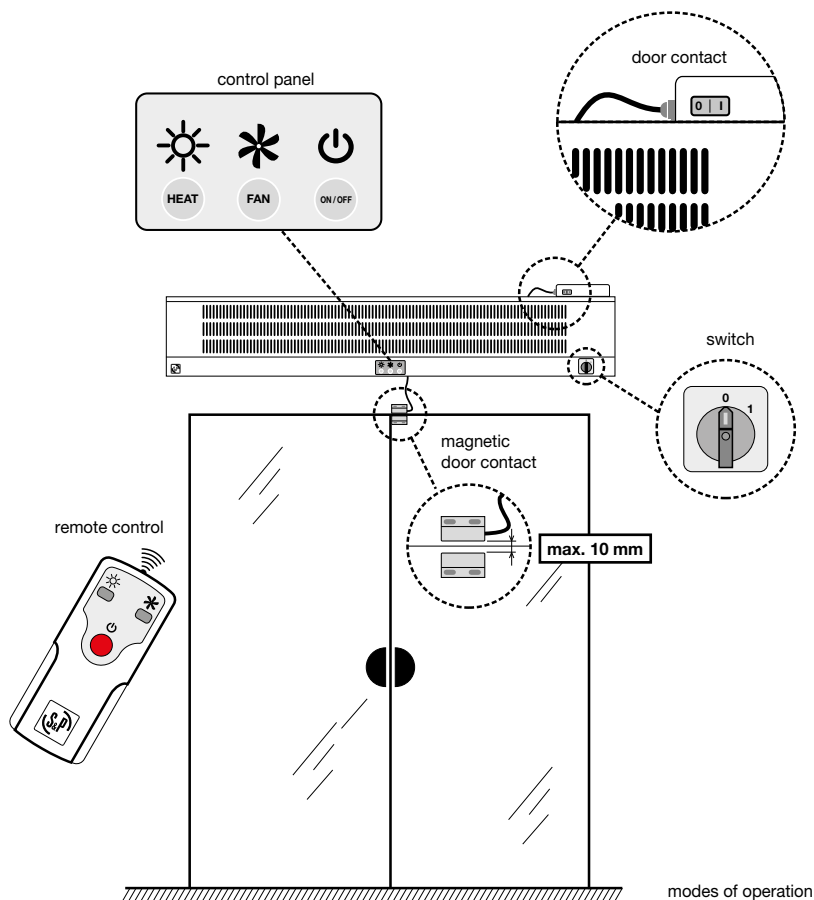
Type	voltage [V]	performance heaters** [kW]	power consumption of fans** [W]	number speeds	maximum flow* [m³/h]	output speed air flow rate [m/s]	max. ΔT** [°C]	sound. pressure*** [dB(A)]	current [A]	weight [kg]
CAH-900 M PD	220–240	3.6 / 2.4	115 / 70	2	1400 / 1200	9	10 / 8	54.2	17.5	17
CAH-1200 M PD	3f 400	6.0 / 4.0	155 / 105	2	2000 / 1500	9	17 / 10	55.4	10.5	22
CAH-1500 M PD	3f 400	9.0 / 6.0	175 / 145	2	2600 / 2000	9	20 / 12	56.1	13.5	27

* maximum flow measured according to AMCA 220, high/low speed

** high/low speed

*** sound pressure measured in the free field at a distance of 1.5 m

Additional illustrations



0 m	9/7 m/s
1 m	5/4 m/s
2 m	4/3 m/s
3 m	2/1 m/s

distance from the aperture / air speed
for high / low speed

recommended distances from walls