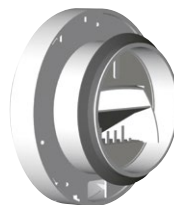
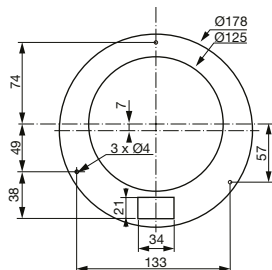


BM2D – electrically operated plastic valves 230 V



detail of the back of the valve

Technical parameters

Plastic valve designed for air discharge with fixed element for flow control. Valves are made of polypropylene, white colour, single-edged seal is placed on the valve neck. BM2D valves are suitable for DCV (demand controlled ventilation) systems. The systems work on the principle of controlling the constant vacuum in the riser pipe.

- 230 V electrical control
- insulation class II, protection class IP20
- suitable for renovation of prefabricated houses without the need to interfere with the HVAC ductwork
- low noise and crosstalk values
- ambient temperature up to 50 °C
- maximum recommended relative humidity 95% (non-condensing)

Installation

The valves are inserted directly into the circular pipe. For a tight connection, the valve has a flexible single-edge seal. The valve can be fixed to the wall or ceiling with three screws. By selecting the BM2D valve variants, the air flow rate can be selected with the valve open or closed to ensure minimal room ventilation.

Functions

When the lights are turned on in the bathroom or toilet, the valve opens and the pressure in the pipework drops. The differential pressure sensor of the CRxB N Ecowatt fans with control electronics will increase the speed to adjust to the previous pressure value. The opening and closing of the valve is delayed by approximately 80 seconds.

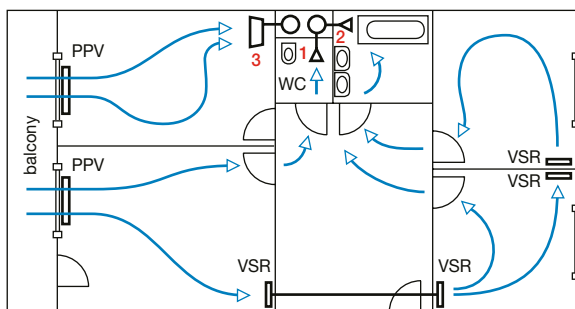
Example of order execution

B M 2 D 12-5 xx / yy

size (12–125 mm) _____
actuator (5–230 V, 3–12 V) _____
min. flow rate when closed _____
max. flow when open _____

⚠ please ask for current delivery
12 V design options

Additional illustration

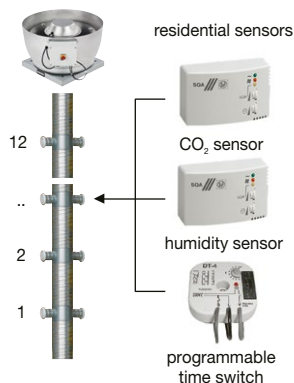


1 – electrically operated valve BM2D (230 V); 2 – valve with 12 V power supply (KEL), which can be placed in Zone 1 above the bath; 3 – hood actuator

| Type | Ø connect [mm] | Ø maximum x depth [mm] | flow air * [m³/h] | performance [W] |
|------------------|----------------|------------------------|-------------------|-----------------|
| BM2D 12-5 7,5/25 | 125 | 180 x 58 | 7,5/25 | 6,6 |
| BM2D 12-5 7,5/50 | 125 | 180 x 58 | 7,5/50 | 6,6 |
| BM2D 12-5 7,5/75 | 125 | 180 x 58 | 7,5/75 | 6,6 |
| BM2D 12-5 10/100 | 125 | 180 x 58 | 10/100 | 6,6 |

* Version with different flow rates on request

DCV controlled ventilation systems actual demand



BM2D is an electrically operated drainage plate valve suitable for systems central ventilation systems with CRVB-N, CRHB-N and CTB Ecowatt Plus fans, which can be controlled e.g. by bathroom and toilet lighting, CO₂ sensors, humidity sensors, thermostats, programmable timers.