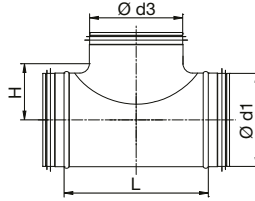
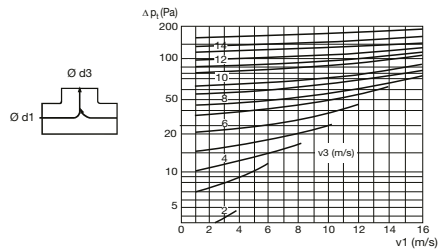
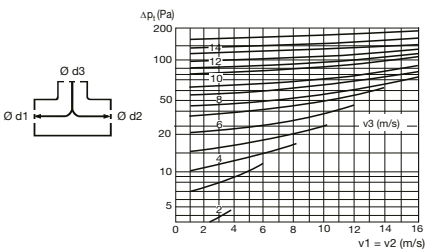
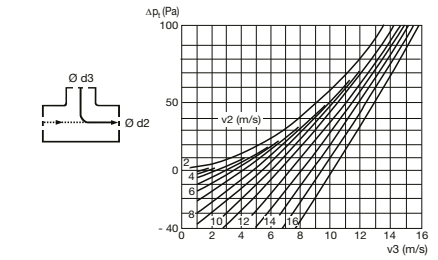
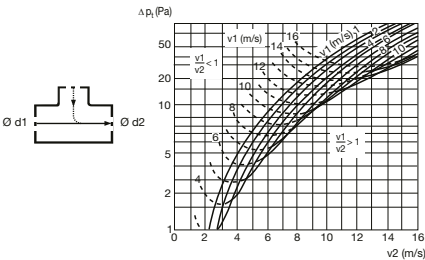
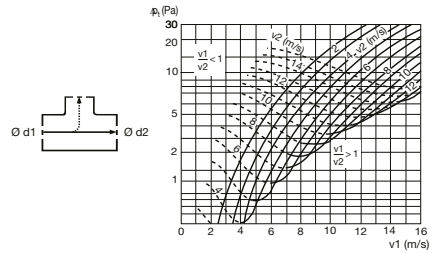
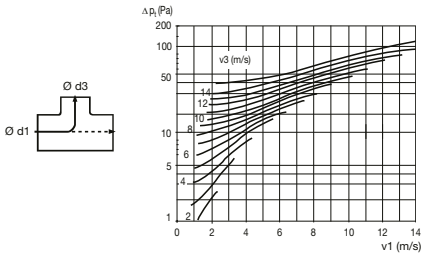


OBJL 90° – einseitiger Abzweig, OBJLG 90° – einseitiger Abzweig mit Dichtung



- die Montage erfolgt durch Pressen
- Lüftung, Klima
- Anschluss an das Rohr mit selbstschneidenden Schrauben

Ø d3 [mm]	Ø d1 [mm]																				
	80		100		125		150		160		180		200		224		250		315		
	L	H	L	H	L	H	L	H	L	H	L	H	L	H	L	H	L	H	L	H	
80	140	52	126	65	146	75	140	87	140	92	140	102	140	112	140	124	156	137			
100	-	-	170	65	184	78	175	90	184	95	175	105	175	115	175	127	175	140			
125	-	-	-	-	200	83	215	95	229	100	215	110	215	115	215	132	220	145	220	178	
150	-	-	-	-	-	-	260	95	-	-	-	-	260	120	-	-	-	-	-	-	
160	-	-	-	-	-	-	-	-	229	105	260	115	281	125	260	137	256	150			
200	-	-	-	-	-	-	-	-	-	-	-	-	265	125	346	137	306	150	306	182	
250	-	-	-	-	-	-	-	-	-	-	-	-	-	-	-	307	150	350	350	182	
315	-	-	-	-	-	-	-	-	-	-	-	-	-	-	-	-	-	-	390	182	



v1, v2, v3 – durchschnittliche Geschwindigkeit in der Kehle d1, d2, d3